

# Crooked Creek Art League



CCAL

## 2020 Fall Art Exhibition Prospectus

December 7, 2020 - January 28, 2021

Still Hopes Retirement Community

West Columbia, SC

<b>Online entry:</b>	<b>Now through November 7, 2020</b>
<b>Jurying:</b>	<b>November 7– November 15, 2020</b>
<b>Artist notification:</b>	<b>November 15, 2020</b>
<b>Artwork delivery:</b>	<b>Saturday, December 5, 2020 Crooked Creek Park, 10 AM-12 PM)</b>
<b>Hanging:</b>	<b>Saturday, December 5, 2020; 8 PM Show representatives only</b>
<b>Taken down:</b>	<b>Friday, January 29, 2021, 2-4 PM Show representatives only</b>
<b>Artwork Pickup:</b>	<b>Saturday, January 30, 2021 Crooked Creek Park, 10 AM – 12 PM</b>
<b>Questions? Contact Show Chair Renea Eshleman (803) 767-5505 <a href="mailto:reshleman@sc.rr.com">reshleman@sc.rr.com</a></b>	

**Eligibility:** Participation is open to all active CCAL Members. A member's 2020-21 dues must be submitted prior to registration. Artwork must be original and completed within the last three years and must not have shown in a previous CCAL spring or Still Hopes juried show. Paintings displayed in public exhibits are eligible for the show. Artwork created in a workshop setting, with or without the direct help of an instructor, may not be entered into the exhibit. Artists agree to the terms of the CCAL Exhibition Contract by submission of their entry.

All burdens related to copyrights shall be the full responsibility of participants. CCAL, its members, officers, or volunteers, will not be held liable for any damages occurring from infringement of copyright. Without documented originality, public domain source, or permission to use suspected copyrighted material, the Show Committee reserves the right to refuse entry of the piece, disqualify the piece for an award, or withdraw an award.

### **Categories:**

**Two-D work:** Oil, watercolor, gouache, acrylic, encaustic, tempera, and pastel; ink, graphite, charcoal, and colored-pencil drawings; mixed media; and linoleum, wood, etching, mono- and litho- prints.

**Photography and digital:** Black and white, color, hand-tinted, digitally-altered photographs and computer generated/digitally altered prints.

**Size and Condition:** Artwork must be completely dry, framed, and ready to hang or otherwise suitably prepared for exhibit. Works must have wires – no saw tooth hangers. Unsealed works such as water media, pastel, charcoal, or ink must be framed under glass or Plexiglas.

Minimum size limitation – 12" x 12" including frame

Maximum size limitation – 48" x 48" including frame

**Sale of Artwork:** A value must be provided for entered artwork for insurance purposes. Artwork not for sale must be designated “NFS” during the online entry process. Artwork available for sale will be listed with the sale price on the wall tag hung with the artwork. Wall tags will include artist contact information for prospective buyers. Any artwork sold must remain hanging for the entire exhibit. **If you sell work to residents or staff at Still Hopes, let Renea know BEFORE take-down so she can advise the Still Hopes Art Committee to leave sold pieces. Artists must arrange with purchasers to collect sales prices. Artists are responsible for collecting and paying sales tax and paying ten percent of the sales price to CCAL.**

**Online Entry Guidelines:** Artists must complete the online registration at: [crookedcreekart.org/ccal-fall-exhibition](http://crookedcreekart.org/ccal-fall-exhibition) and pay the non-refundable fee for one or two entries. Artwork images must be formatted vertically or horizontally without frame.

**JPEG Images:** ARTWORK WILL BE JUDGED FOR ENTRY AND AWARDS FROM THE JPEG IMAGE YOU SUBMIT WITH YOUR ENTRY. THIS WILL BE THE SOLE VIEWING OF YOUR ARTWORK SEEN BY THE JUROR; IT IS, THEREFORE, IMPORTANT TO SUBMIT A GOOD QUALITY PHOTO. THE PHOTO WILL ALSO BE USED IN PUBLICITY FOR THE EXHIBIT.

**Entry Fee:** The \$25 non-refundable entry fee entitles each artist to enter one or two works. Art Pickup: Artwork MUST be picked up and signed out at the proper time unless other arrangements have been made with the juried show chairman. Failure to comply with "pickup" provisions may disqualify a member from participation the following year. Exemption from disqualification may only be determined by the CCAL Board of Directors.

**Liability:** At no time will the Crooked Creek Art League (CCAL) or Still Hopes be responsible for the safety of your artwork. Artwork hangs at the sole risk of the artist.

**Suitable Work:** Crooked Creek Art League and Still Hopes reserve the right to reject a work of art deemed inappropriate for the setting.

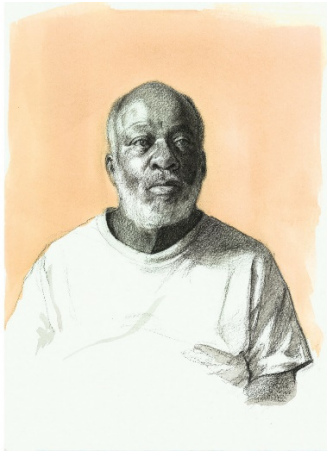
**Use of Images:** By entering, artists agree to the use of images of their artwork in promotional materials including, but not limited to, social media, the CCAL website, brochures, advertisements and press releases.

**Awards:** Acceptance and award selections will be made at the juror's discretion and will be announced through email, publicity, and social media. Award amounts will be determined based on factors not yet known such as the number of participants and entries and amounts of sponsored awards. The show will be judged and awards to be determined. Still Hopes residents and staff will vote for the People's Choice award.

**Reception:** Due to Covid-19 restrictions, Still Hopes is currently not open to the public so we cannot hold a reception/awards ceremony.



This organization is funded in part by the South Carolina Arts Commission which receives support from the National Endowment for the Arts. Additional support in this grant comes from the John and Susan Bennett Memorial Arts Fund of The Coastal Community Foundation of South Carolina.



## Artist Statement – Juror Nathan Bertling

A classically-trained contemporary realist, Bertling works in the wonder of people and place. His pictures embody a dream-like stillness, pulsing with the life just beneath the surface.

Fine drawings and oil paintings line the walls of his home studio in Greenville, South Carolina, and his works hang in numerous private collections.



Convinced that meaning is moving, Bertling chases moments worth collecting -- splices lifted from a larger narrative. Believing beauty stubbornly persists, he longs to follow its lead in all his work.

<http://www.nathanbertling.com/>

### **Artist Exhibition Contract** **CCAL Still Hopes Exhibit 2020**

By submitting an entry, I agree:

I have read the Exhibition Prospectus and agree with the rules and regulations included. I understand that violations of guidelines will be reviewed by the Exhibit Committee and/or the CCAL Board of Directors and that failure to comply with parameters to participate including scheduled pick-up dates/time may disqualify me from entry in future shows.

Submission of my work is acknowledgement that I hold harmless CCAL and Still Hopes, sponsoring and participating organizations, their directors, officers, employees, agents, and volunteers from any responsibility, personal liability, claims, loss, theft, or damage arising out of or in conjunction with my participation.

**Artwork Identification Labels**

*Each entry must have on the back either directly or attached paper to show:*

---

**Artist Name:** \_\_\_\_\_

**Tel #** \_\_\_\_\_ **Email:** \_\_\_\_\_

**Title of Piece:** \_\_\_\_\_

**Media:** \_\_\_\_\_

**Size of Work (HxWxD):** \_\_\_\_\_

**For Sale:** ☐ Yes ☐ No **Price/Insured Value: \$** \_\_\_\_\_

---

**Artist Name:** \_\_\_\_\_

**Tel #** \_\_\_\_\_ **Email:** \_\_\_\_\_

**Title of Piece:** \_\_\_\_\_

**Media:** \_\_\_\_\_

**Size of Work (HxWxD):** \_\_\_\_\_

**For Sale:** ☐ Yes ☐ No **Price/Insured Value: \$** \_\_\_\_\_

---